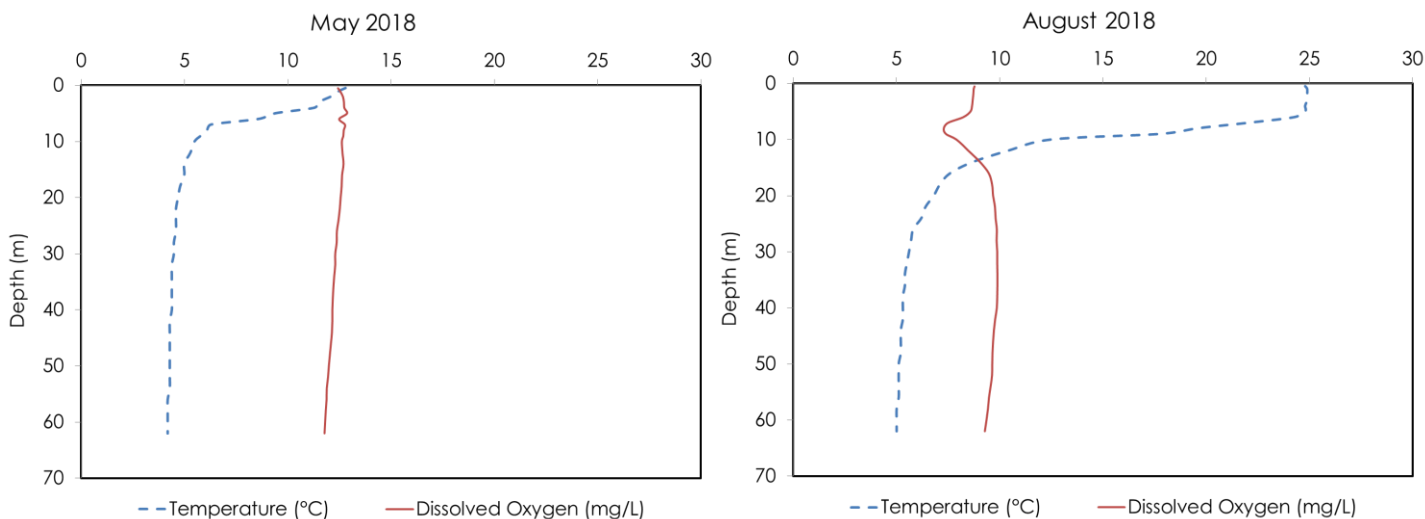


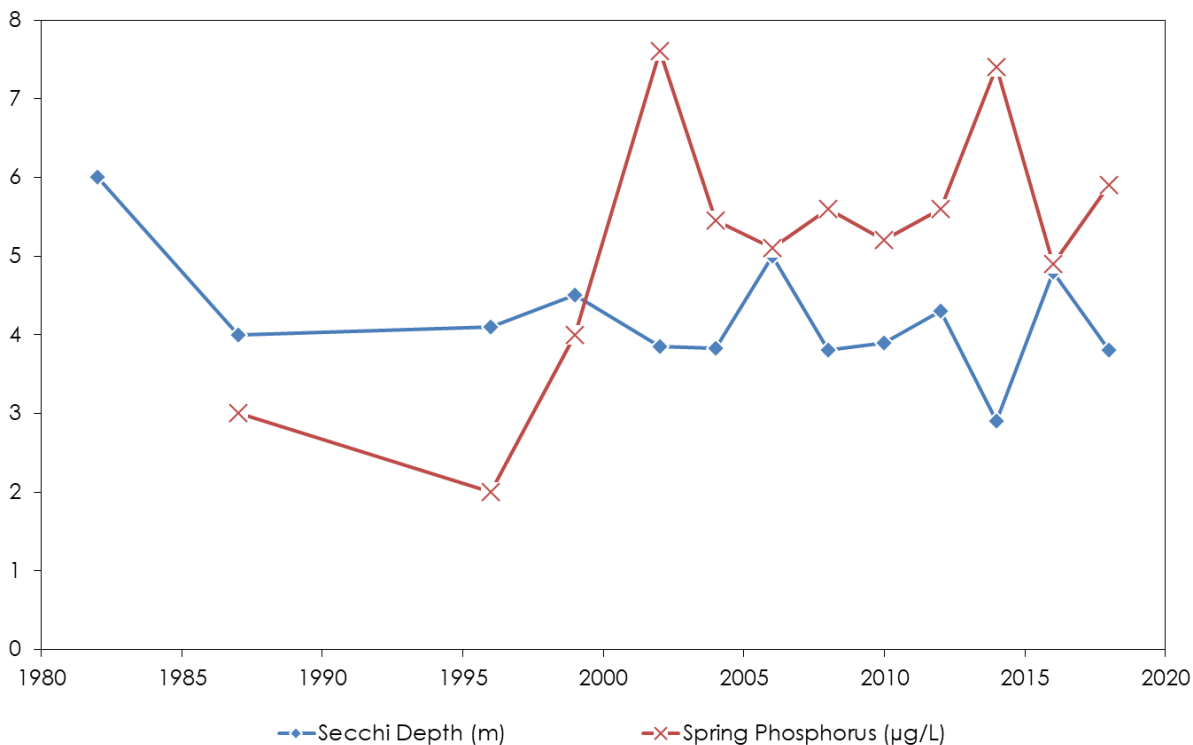
# Lake Muskoka - Main

Sample Point: 45.0682 -79.5156

Municipality:	<b>Muskoka Lakes</b>	Quaternary Watershed:	<b>Lake Muskoka</b>
Surface Area:	<b>107.55 km<sup>2</sup></b>	Watershed Area (excluding lake):	<b>130.41 km<sup>2</sup></b>
Maximum Depth:	<b>67 m</b>	Lake Trout Lake?	<b>Yes</b>
Wetland Area:	<b>6 %</b>	Secchi Depth (10-year average):	<b>3.9 m</b>
Phosphorus (10-year average):	<b>5.8 µg/L</b>	Sensitivity:	<b>Moderate</b>



## Lake Muskoka - Main Long Term Monitoring Data



This information is supplied without expressed or implied warranty of any kind, including warranty of fitness for a particular purpose. In no event will The District Municipality of Muskoka be liable for any damages, whether incidental, consequential or direct in conjunction with, or arising from the furnishing or use of this information.